

ASPENPEAK[®]

DAKOTA JOHNSON

MELANIE GRIFFITH AND DON JOHNSON'S
STUNNING, TALENTED DAUGHTER
(AND A RISING ASPEN STAR!)

IN THE LOOP

DENVER MAYOR
JOHN HICKENLOOPER
ON THE 2008 DEMOCRATIC
NATIONAL CONVENTION

MOUNTAINS THAT ROCK

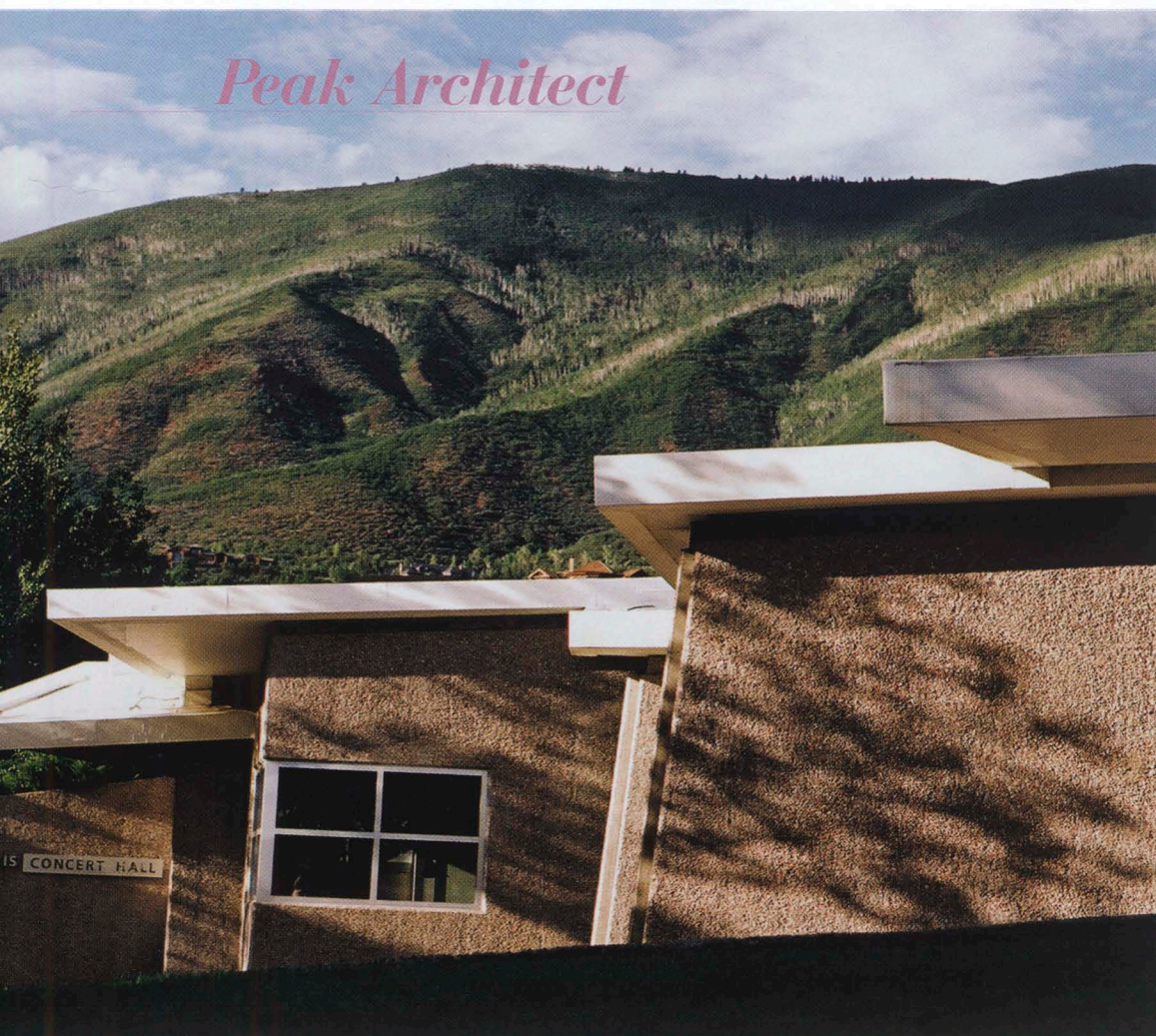
A RARE VIEW THROUGH
LYNN GOLDSMITH'S
LEGENDARY LENS

PLUS

Grace Slick, Todd Helton,
John Oates, Kelly Wearstler,
chef Masaharu Morimoto,
and Walter Isaacson

THE HEIGHT
OF SUMMER
FASHION

**PEAK STYLE:
DO YOU HAVE IT?**
NEW TRENDS IN DESIGN
AND ARCHITECTURE

Peak Architect

TEAGUE'S TOWN

ASPEN ARCHITECTURE is defined by the ingenuity of architect Harry Teague. His résumé includes the Benedict Music Tent, Harris Concert Hall (SHOWN ABOVE), the Aspen Center for Physics, Anderson Ranch, Colorado Mountain College, Aspen Community School, and Marolt Ranch Housing. Not to mention his residential work, including the Border House on Red Mountain for Paula Zurcher and the unforgettable addition to the late Linda Pace's house.

Teague's distinctly architectural idiom was instilled in part by Fritz Benedict, the architect most associated with Aspen, with whom Teague worked after graduating from Yale School of Architecture. Benedict, in turn, had studied with the legendary Frank Lloyd Wright.

"He was a visionary," Teague says of Benedict. "He always had ideas on the table about what Aspen could be like. Fritz showed me you don't

have to be a passive person—you can be aggressive to help people see your vision."

The best part for Harry Teague goes far beyond any fees he might glean. He calls it the "comeback thing," when he gets to return to the very structures that he built—to the Tent for a concert, to Anderson Ranch for a lecture, to the Aspen Community School to see his five-year-old daughter sing on the stage he designed and built as his first project 35 years ago. The reconstruction of the school will be a key component of rebuilding the Aspen Music Festival and School's campus, his latest project.

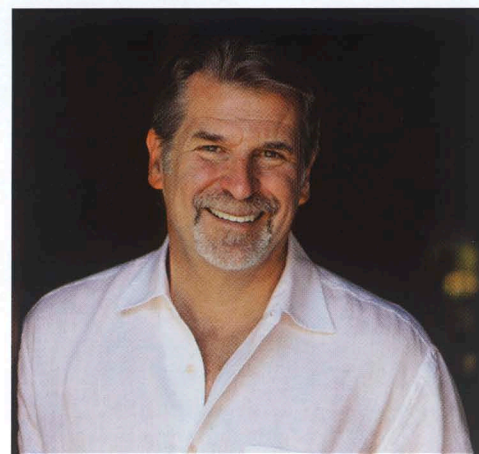
"What's been wonderful is I've found a community to work in that matched my abilities," he says. "I feel unbelievably fortunate that Aspen was growing in ways that allow me to do work. It's like a dream. It's wonderful." *Harry Teague Architects, 970-927-4862.*—MICHAEL CONNIFF

BOUTIQUE
RETREAT*Peak Developer*

TOM DIVENERE, founder and developer of the new private residence club Dancing Bear Aspen, hopes that in five years Aspenites will point to his boutique club overlooking Wagner Park and say: "That's the kind of project we want."

Dancing Bear is actually two buildings, with the first (comprising nine units) sold out and scheduled to open by Christmas 2008; the second (11 units) is slated for completion by summer 2009. The price of the three-bedroom, three-and-a-half-bath units has risen from \$589,000 to \$949,000 for a one-eighth share, which includes three weeks in summer and three more in winter. Annual maintenance will be approximately \$15,000 to \$16,000 per unit. "I wanted to create this club in downtown Aspen to celebrate what Aspen is for me—meeting people, being outdoors, and a great experience in a club I hope becomes part of Aspen family traditions," DiVenere says.

The first thing DiVenere tells you about—before the 120-inch TVs, health club, and rooftop hot tubs—is how two new restaurants will bring his club to locals and locals to his club. A restaurant in his first building will be the latest for Craig and Samantha Cordts-Pearce, owners of Wild Fig and LuLu Wilson. The second will be the Aspen outpost of celebrated chef Mark Fischer, a James Beard Foundation Award nominee who owns both Phat Thai and Six89 in Carbondale. *Dancing Bear Aspen, 620 East Hyman Avenue, 970-920-2510; dancingbearaspen.com.*—M.C.



photographs by Alex Irvin (HARRIS HALL); Carol Miller (DIVENERE)